

3/69 Centennial Circuit Byron Bay NSW

Discover the epitome of modern art and industrial charm at 3/69 Centennial Circuit, nestled within the heart of Byron's industrial estate. This warehouse space offers a delightful combination of aesthetics and functionality, designed to cater to your diverse needs.

Spanning an impressive 91.7 sqm, this two-level unit showcases contemporary style and practicality. The ground floor features sleek concrete floors for a polished look, while the upper-level boasts inviting timber floors that radiate warmth and character.

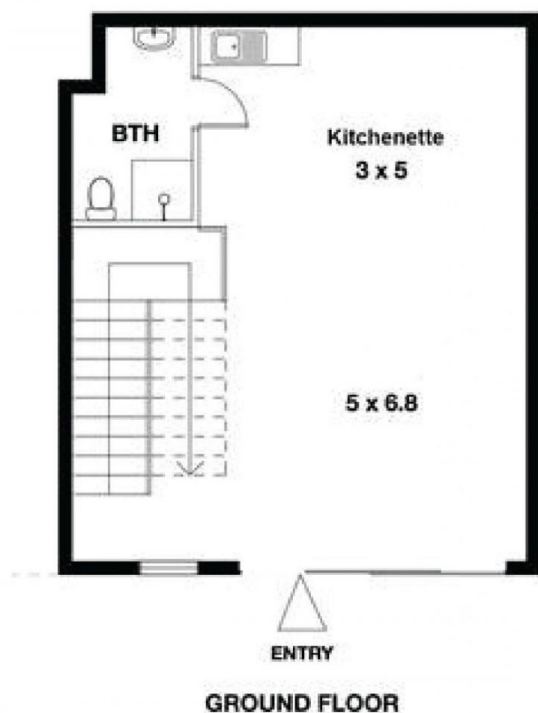
Convenience is key, as this warehouse comes complete with toilet and shower facilities, ensuring comfort and

[For full version visit the website](https://www.oneagencybps.com.au)

Price : \$795,000
Building Size : 92 sqm
Land Size : 82 sqm
View : <https://www.oneagencybps.com.au/8128985>



Robert Bakker
80771000



3/69 Centennial Circuit, Byron Bay

Dimensions are approximate. All information herein is gathered from sources we believe to be reliable. However, we cannot guarantee its accuracy and interested persons should rely on their own enquiries.

